

## The CONTENTS Procedure

<b>Data Set Name</b>	WORK.MIETE	<b>Observations</b>	2053
<b>Member Type</b>	DATA	<b>Variables</b>	13
<b>Engine</b>	V9	<b>Indexes</b>	0
<b>Created</b>	02/12/2016 20:50:41	<b>Observation Length</b>	104
<b>Last Modified</b>	02/12/2016 20:50:41	<b>Deleted Observations</b>	0
<b>Protection</b>		<b>Compressed</b>	NO
<b>Data Set Type</b>		<b>Sorted</b>	NO
<b>Label</b>			
<b>Data Representation</b>	WINDOWS_64		
<b>Encoding</b>	wlatin1 Western (Windows)		

Engine/Host Dependent Information	
<b>Data Set Page Size</b>	65536
<b>Number of Data Set Pages</b>	4
<b>First Data Page</b>	1
<b>Max Obs per Page</b>	629
<b>Obs in First Data Page</b>	606
<b>Number of Data Set Repairs</b>	0
<b>ExtendObsCounter</b>	YES
<b>Filename</b>	C:\Users\Conny\AppData\Local\Temp\SAS Temporary Files\_TD15856_CONNY_LAPTOP_\miete.sas7bdat
<b>Release Created</b>	9.0401M2
<b>Host Created</b>	X64_7HOME

Alphabetic List of Variables and Attributes					
#	Variable	Type	Len	Format	Informat
12	badextra	Num	8	BEST12.	BEST32.
11	badkach0	Num	8	BEST12.	BEST32.
6	bez	Num	8	BEST12.	BEST32.
5	bj	Num	8	BEST12.	BEST32.
13	kueche	Num	8	BEST12.	BEST32.
1	nm	Num	8	BEST12.	BEST32.
2	nmqm	Num	8	BEST12.	BEST32.
4	rooms	Num	8	BEST12.	BEST32.
3	wfl	Num	8	BEST12.	BEST32.
8	wohnbest	Num	8	BEST12.	BEST32.
7	wohngut	Num	8	BEST12.	BEST32.

## The CONTENTS Procedure

Alphabetic List of Variables and Attributes					
#	Variable	Type	Len	Format	Informat
9	ww0	Num	8	BEST12.	BEST32.
10	zh0	Num	8	BEST12.	BEST32.

## The MEANS Procedure

Variable	N	Mean	Std Dev	Minimum	Maximum
nm	2053	570.0929810	245.4345066	77.3100000	1789.55
nmqm	2053	8.3939016	2.4667425	1.4700000	20.0900000
wfl	2053	69.5952265	25.1625576	17.0000000	185.0000000
rooms	2053	2.5976620	0.9822173	1.0000000	6.0000000
bj	2053	1957.98	24.8791860	1918.00	2001.00
bez	2053	11.2679006	7.0374470	1.0000000	25.0000000
wohngut	2053	0.3911349	0.4881234	0	1.0000000
wohnbest	2053	0.0219191	0.1464553	0	1.0000000
ww0	2053	0.0350706	0.1840032	0	1.0000000
zh0	2053	0.0852411	0.2793082	0	1.0000000
badkach0	2053	0.1850950	0.3884692	0	1.0000000
badextra	2053	0.0930346	0.2905517	0	1.0000000
kueche	2053	0.0730638	0.2603046	0	1.0000000

## The FREQ Procedure

rooms	Frequency	Percent	Cumulative Frequency	Cumulative Percent
1	255	12.42	255	12.42
2	715	34.83	970	47.25
3	759	36.97	1729	84.22
4	263	12.81	1992	97.03
5	47	2.29	2039	99.32
6	14	0.68	2053	100.00

The FREQ Procedure

Table of bez by rooms							
bez	rooms						Total
	1	2	3	4	5	6	
1	4	11	15	6	4	3	43
	0.19	0.54	0.73	0.29	0.19	0.15	2.09
	9.30	25.58	34.88	13.95	9.30	6.98	
	1.57	1.54	1.98	2.28	8.51	21.43	
2	16	61	66	13	4	1	161
	0.78	2.97	3.21	0.63	0.19	0.05	7.84
	9.94	37.89	40.99	8.07	2.48	0.62	
	6.27	8.53	8.70	4.94	8.51	7.14	
3	21	60	41	9	1	0	132
	1.02	2.92	2.00	0.44	0.05	0.00	6.43
	15.91	45.45	31.06	6.82	0.76	0.00	
	8.24	8.39	5.40	3.42	2.13	0.00	
4	31	36	48	20	2	0	137
	1.51	1.75	2.34	0.97	0.10	0.00	6.67
	22.63	26.28	35.04	14.60	1.46	0.00	
	12.16	5.03	6.32	7.60	4.26	0.00	
5	20	35	59	16	7	2	139
	0.97	1.70	2.87	0.78	0.34	0.10	6.77
	14.39	25.18	42.45	11.51	5.04	1.44	
	7.84	4.90	7.77	6.08	14.89	14.29	
6	8	25	22	10	1	0	66
	0.39	1.22	1.07	0.49	0.05	0.00	3.21
	12.12	37.88	33.33	15.15	1.52	0.00	
	3.14	3.50	2.90	3.80	2.13	0.00	
7	15	21	23	8	2	0	69
	0.73	1.02	1.12	0.39	0.10	0.00	3.36
	21.74	30.43	33.33	11.59	2.90	0.00	
	5.88	2.94	3.03	3.04	4.26	0.00	
8	5	24	24	7	2	0	62
	0.24	1.17	1.17	0.34	0.10	0.00	3.02
	8.06	38.71	38.71	11.29	3.23	0.00	
	1.96	3.36	3.16	2.66	4.26	0.00	
9	16	70	60	23	5	3	177
	0.78	3.41	2.92	1.12	0.24	0.15	8.62
	9.04	39.55	33.90	12.99	2.82	1.69	
	6.27	9.79	7.91	8.75	10.64	21.43	
10	5	22	17	12	2	0	58
	0.24	1.07	0.83	0.58	0.10	0.00	2.83
	8.62	37.93	29.31	20.69	3.45	0.00	
	1.96	3.08	2.24	4.56	4.26	0.00	
11	7	26	30	6	1	0	70
	0.34	1.27	1.46	0.29	0.05	0.00	3.41
	10.00	37.14	42.86	8.57	1.43	0.00	
	2.75	3.64	3.95	2.28	2.13	0.00	
12	10	27	24	16	1	0	78
	0.49	1.32	1.17	0.78	0.05	0.00	3.80
	12.82	34.62	30.77	20.51	1.28	0.00	
	3.92	3.78	3.16	6.08	2.13	0.00	
13	8	31	43	14	2	0	98
	0.39	1.51	2.09	0.68	0.10	0.00	4.77
	8.16	31.63	43.88	14.29	2.04	0.00	
	3.14	4.34	5.67	5.32	4.26	0.00	

Frequency  
Percent  
Row Pct  
Col Pct

The FREQ Procedure

Table of bez by rooms							
bez	rooms						Total
	1	2	3	4	5	6	
14	7	25	19	8	1	0	60
	0.34	1.22	0.93	0.39	0.05	0.00	2.92
	11.67	41.67	31.67	13.33	1.67	0.00	
	2.75	3.50	2.50	3.04	2.13	0.00	
15	3	21	14	2	1	2	43
	0.15	1.02	0.68	0.10	0.05	0.10	2.09
	6.98	48.84	32.56	4.65	2.33	4.65	
	1.18	2.94	1.84	0.76	2.13	14.29	
16	12	44	43	16	0	0	115
	0.58	2.14	2.09	0.78	0.00	0.00	5.60
	10.43	38.26	37.39	13.91	0.00	0.00	
	4.71	6.15	5.67	6.08	0.00	0.00	
17	13	22	24	6	2	0	67
	0.63	1.07	1.17	0.29	0.10	0.00	3.26
	19.40	32.84	35.82	8.96	2.99	0.00	
	5.10	3.08	3.16	2.28	4.26	0.00	
18	11	33	24	13	1	0	82
	0.54	1.61	1.17	0.63	0.05	0.00	3.99
	13.41	40.24	29.27	15.85	1.22	0.00	
	4.31	4.62	3.16	4.94	2.13	0.00	
19	17	26	46	14	2	1	106
	0.83	1.27	2.24	0.68	0.10	0.05	5.16
	16.04	24.53	43.40	13.21	1.89	0.94	
	6.67	3.64	6.06	5.32	4.26	7.14	
20	4	15	20	7	3	1	50
	0.19	0.73	0.97	0.34	0.15	0.05	2.44
	8.00	30.00	40.00	14.00	6.00	2.00	
	1.57	2.10	2.64	2.66	6.38	7.14	
21	6	19	22	8	1	0	56
	0.29	0.93	1.07	0.39	0.05	0.00	2.73
	10.71	33.93	39.29	14.29	1.79	0.00	
	2.35	2.66	2.90	3.04	2.13	0.00	
22	1	6	13	3	1	0	24
	0.05	0.29	0.63	0.15	0.05	0.00	1.17
	4.17	25.00	54.17	12.50	4.17	0.00	
	0.39	0.84	1.71	1.14	2.13	0.00	
23	0	7	3	4	0	0	14
	0.00	0.34	0.15	0.19	0.00	0.00	0.68
	0.00	50.00	21.43	28.57	0.00	0.00	
	0.00	0.98	0.40	1.52	0.00	0.00	
24	4	7	11	6	0	1	29
	0.19	0.34	0.54	0.29	0.00	0.05	1.41
	13.79	24.14	37.93	20.69	0.00	3.45	
	1.57	0.98	1.45	2.28	0.00	7.14	
25	11	41	48	16	1	0	117
	0.54	2.00	2.34	0.78	0.05	0.00	5.70
	9.40	35.04	41.03	13.68	0.85	0.00	
	4.31	5.73	6.32	6.08	2.13	0.00	
<b>Total</b>	255	715	759	263	47	14	2053
	12.42	34.83	36.97	12.81	2.29	0.68	100.00

Frequency  
Percent  
Row Pct  
Col Pct

The MEANS Procedure

Analysis Variable : nm				
N	Mean	Std Dev	Minimum	Maximum
2053	570.0929810	245.4345066	77.3100000	1789.55

The UNIVARIATE Procedure  
Variable: nm

Moments			
<b>N</b>	2053	<b>Sum Weights</b>	2053
<b>Mean</b>	570.092981	<b>Sum Observations</b>	1170400.89
<b>Std Deviation</b>	245.434507	<b>Variance</b>	60238.097
<b>Skewness</b>	1.05329533	<b>Kurtosis</b>	1.81365382
<b>Uncorrected SS</b>	790845907	<b>Corrected SS</b>	123608575
<b>Coeff Variation</b>	43.0516626	<b>Std Error Mean</b>	5.41677937

Basic Statistical Measures			
Location		Variability	
<b>Mean</b>	570.0930	<b>Std Deviation</b>	245.43451
<b>Median</b>	534.3000	<b>Variance</b>	60238
<b>Mode</b>	664.6900	<b>Range</b>	1712
		<b>Interquartile Range</b>	310.53000

Tests for Location: Mu0=0				
Test	Statistic		p Value	
<b>Student's t</b>	t	105.2457	<b>Pr &gt;  t </b>	<.0001
<b>Sign</b>	M	1026.5	<b>Pr &gt;=  M </b>	<.0001
<b>Signed Rank</b>	S	1054216	<b>Pr &gt;=  S </b>	<.0001

Quantiles (Definition 5)	
Level	Quantile
<b>100% Max</b>	1789.55
<b>99%</b>	1355.28
<b>95%</b>	1022.16
<b>90%</b>	894.76
<b>75% Q3</b>	700.48
<b>50% Median</b>	534.30
<b>25% Q1</b>	389.95
<b>10%</b>	299.45
<b>5%</b>	260.15
<b>1%</b>	151.00
<b>0% Min</b>	77.31



**The UNIVARIATE Procedure**  
**Variable: nm**

Extreme Observations			
Lowest		Highest	
Value	Obs	Value	Obs
77.31	397	1578.39	676
81.28	382	1632.03	970
98.85	1414	1661.55	718
104.14	1477	1749.15	114
105.90	1894	1789.55	371

## The MEANS Procedure

Analysis Variable : nm						
rooms	N Obs	N	Mean	Std Dev	Minimum	Maximum
1	255	255	346.9451765	100.3332306	106.2200000	1288.48
2	715	715	486.7940979	166.5325065	77.3100000	1467.69
3	759	759	633.5174572	229.3336341	145.3100000	1789.55
4	263	263	747.9875285	261.7269789	193.1800000	1749.15
5	47	47	900.5672340	338.6627186	327.8400000	1661.55
6	14	14	998.9257143	330.2915880	621.5200000	1538.43

The UNIVARIATE Procedure  
 Variable: nm  
 rooms = 1

Moments			
<b>N</b>	255	<b>Sum Weights</b>	255
<b>Mean</b>	346.945176	<b>Sum Observations</b>	88471.02
<b>Std Deviation</b>	100.333231	<b>Variance</b>	10066.7572
<b>Skewness</b>	3.10678945	<b>Kurtosis</b>	30.0043827
<b>Uncorrected SS</b>	33251550	<b>Corrected SS</b>	2556956.32
<b>Coeff Variation</b>	28.9190447	<b>Std Error Mean</b>	6.28311062

Basic Statistical Measures			
Location		Variability	
<b>Mean</b>	346.9452	<b>Std Deviation</b>	100.33323
<b>Median</b>	344.0600	<b>Variance</b>	10067
<b>Mode</b>	383.4800	<b>Range</b>	1182
		<b>Interquartile Range</b>	101.09000

Tests for Location: Mu0=0				
Test	Statistic		p Value	
<b>Student's t</b>	t	55.2187	<b>Pr &gt;  t </b>	<.0001
<b>Sign</b>	M	127.5	<b>Pr &gt;=  M </b>	<.0001
<b>Signed Rank</b>	S	16320	<b>Pr &gt;=  S </b>	<.0001

Quantiles (Definition 5)	
Level	Quantile
<b>100% Max</b>	1288.48
<b>99%</b>	548.79
<b>95%</b>	480.63
<b>90%</b>	444.83
<b>75% Q3</b>	393.70
<b>50% Median</b>	344.06
<b>25% Q1</b>	292.61
<b>10%</b>	254.75
<b>5%</b>	197.44
<b>1%</b>	109.32
<b>0% Min</b>	106.22

The UNIVARIATE Procedure  
Variable: nm  
rooms = 1

Extreme Observations			
Lowest		Highest	
Value	Obs	Value	Obs
106.22	92	510.79	1623
107.74	336	541.87	365
109.32	1209	548.79	781
111.97	1341	642.88	500
118.09	1503	1288.48	230

The UNIVARIATE Procedure  
 Variable: nm  
 rooms = 2

Moments			
<b>N</b>	715	<b>Sum Weights</b>	715
<b>Mean</b>	486.794098	<b>Sum Observations</b>	348057.78
<b>Std Deviation</b>	166.532507	<b>Variance</b>	27733.0757
<b>Skewness</b>	0.55776105	<b>Kurtosis</b>	2.07078958
<b>Uncorrected SS</b>	189233889	<b>Corrected SS</b>	19801416.1
<b>Coeff Variation</b>	34.2100505	<b>Std Error Mean</b>	6.22796263

Basic Statistical Measures			
Location		Variability	
<b>Mean</b>	486.7941	<b>Std Deviation</b>	166.53251
<b>Median</b>	486.7600	<b>Variance</b>	27733
<b>Mode</b>	588.0000	<b>Range</b>	1390
		<b>Interquartile Range</b>	216.98000

Note: The mode displayed is the smallest of 3 modes with a count of 4.

Tests for Location: Mu0=0				
Test	Statistic		p Value	
<b>Student's t</b>	<b>t</b>	78.16266	<b>Pr &gt;  t </b>	<.0001
<b>Sign</b>	<b>M</b>	357.5	<b>Pr &gt;=  M </b>	<.0001
<b>Signed Rank</b>	<b>S</b>	127985	<b>Pr &gt;=  S </b>	<.0001

Quantiles (Definition 5)	
Level	Quantile
<b>100% Max</b>	1467.69
<b>99%</b>	957.26
<b>95%</b>	748.55
<b>90%</b>	675.24
<b>75% Q3</b>	590.54
<b>50% Median</b>	486.76
<b>25% Q1</b>	373.56
<b>10%</b>	280.70
<b>5%</b>	224.55
<b>1%</b>	124.47
<b>0% Min</b>	77.31

The UNIVARIATE Procedure  
Variable: nm  
rooms = 2

Extreme Observations			
Lowest		Highest	
Value	Obs	Value	Obs
77.31	397	1002.80	1107
81.28	382	1053.25	442
98.85	1414	1069.68	1999
104.14	1477	1196.44	1565
105.90	1894	1467.69	864

The UNIVARIATE Procedure  
 Variable: nm  
 rooms = 3

Moments			
<b>N</b>	759	<b>Sum Weights</b>	759
<b>Mean</b>	633.517457	<b>Sum Observations</b>	480839.75
<b>Std Deviation</b>	229.333634	<b>Variance</b>	52593.9157
<b>Skewness</b>	0.74885254	<b>Kurtosis</b>	1.58767609
<b>Uncorrected SS</b>	344486564	<b>Corrected SS</b>	39866188.1
<b>Coeff Variation</b>	36.2000497	<b>Std Error Mean</b>	8.32428355

Basic Statistical Measures			
Location		Variability	
<b>Mean</b>	633.5175	<b>Std Deviation</b>	229.33363
<b>Median</b>	617.6000	<b>Variance</b>	52594
<b>Mode</b>	664.6900	<b>Range</b>	1644
		<b>Interquartile Range</b>	297.02000

Tests for Location: Mu0=0				
Test	Statistic		p Value	
<b>Student's t</b>	t	76.10474	<b>Pr &gt;  t </b>	<.0001
<b>Sign</b>	M	379.5	<b>Pr &gt;=  M </b>	<.0001
<b>Signed Rank</b>	S	144210	<b>Pr &gt;=  S </b>	<.0001

Quantiles (Definition 5)	
Level	Quantile
<b>100% Max</b>	1789.55
<b>99%</b>	1278.25
<b>95%</b>	1022.60
<b>90%</b>	922.52
<b>75% Q3</b>	769.76
<b>50% Median</b>	617.60
<b>25% Q1</b>	472.74
<b>10%</b>	359.75
<b>5%</b>	299.45
<b>1%</b>	193.38
<b>0% Min</b>	145.31

The UNIVARIATE Procedure  
Variable: nm  
rooms = 3

Extreme Observations			
Lowest		Highest	
Value	Obs	Value	Obs
145.31	1732	1482.77	1482
149.62	147	1532.99	1374
157.51	834	1575.71	1311
165.26	1617	1632.03	970
170.04	385	1789.55	371



The UNIVARIATE Procedure  
 Variable: nm  
 rooms = 4

Moments			
<b>N</b>	263	<b>Sum Weights</b>	263
<b>Mean</b>	747.987529	<b>Sum Observations</b>	196720.72
<b>Std Deviation</b>	261.726979	<b>Variance</b>	68501.0115
<b>Skewness</b>	0.63563757	<b>Kurtosis</b>	0.67648266
<b>Uncorrected SS</b>	165091910	<b>Corrected SS</b>	17947265
<b>Coeff Variation</b>	34.9908212	<b>Std Error Mean</b>	16.1387769

Basic Statistical Measures			
Location		Variability	
<b>Mean</b>	747.9875	<b>Std Deviation</b>	261.72698
<b>Median</b>	723.4900	<b>Variance</b>	68501
<b>Mode</b>	920.3400	<b>Range</b>	1556
		<b>Interquartile Range</b>	373.84000

Tests for Location: Mu0=0				
Test	Statistic		p Value	
<b>Student's t</b>	t	46.34723	<b>Pr &gt;  t </b>	<.0001
<b>Sign</b>	M	131.5	<b>Pr &gt;=  M </b>	<.0001
<b>Signed Rank</b>	S	17358	<b>Pr &gt;=  S </b>	<.0001

Quantiles (Definition 5)	
Level	Quantile
<b>100% Max</b>	1749.15
<b>99%</b>	1505.66
<b>95%</b>	1216.99
<b>90%</b>	1073.73
<b>75% Q3</b>	920.34
<b>50% Median</b>	723.49
<b>25% Q1</b>	546.50
<b>10%</b>	434.56
<b>5%</b>	392.80
<b>1%</b>	265.22
<b>0% Min</b>	193.18

The UNIVARIATE Procedure  
Variable: nm  
rooms = 4

Extreme Observations			
Lowest		Highest	
Value	Obs	Value	Obs
193.18	794	1452.93	722
218.11	2032	1459.49	1556
265.22	643	1505.66	909
271.17	1359	1578.39	676
276.33	619	1749.15	114

The UNIVARIATE Procedure  
 Variable: nm  
 rooms = 5

Moments			
<b>N</b>	47	<b>Sum Weights</b>	47
<b>Mean</b>	900.567234	<b>Sum Observations</b>	42326.66
<b>Std Deviation</b>	338.662719	<b>Variance</b>	114692.437
<b>Skewness</b>	0.28580892	<b>Kurtosis</b>	-0.6280296
<b>Uncorrected SS</b>	43393855.2	<b>Corrected SS</b>	5275852.1
<b>Coeff Variation</b>	37.6054897	<b>Std Error Mean</b>	49.3990346

Basic Statistical Measures			
Location		Variability	
<b>Mean</b>	900.5672	<b>Std Deviation</b>	338.66272
<b>Median</b>	917.0200	<b>Variance</b>	114692
<b>Mode</b>	.	<b>Range</b>	1334
		<b>Interquartile Range</b>	539.42000

Tests for Location: Mu0=0				
Test	Statistic		p Value	
<b>Student's t</b>	t	18.23046	<b>Pr &gt;  t </b>	<.0001
<b>Sign</b>	M	23.5	<b>Pr &gt;=  M </b>	<.0001
<b>Signed Rank</b>	S	564	<b>Pr &gt;=  S </b>	<.0001

Quantiles (Definition 5)	
Level	Quantile
<b>100% Max</b>	1661.55
<b>99%</b>	1661.55
<b>95%</b>	1527.30
<b>90%</b>	1416.96
<b>75% Q3</b>	1159.36
<b>50% Median</b>	917.02
<b>25% Q1</b>	619.94
<b>10%</b>	473.64
<b>5%</b>	388.92
<b>1%</b>	327.84
<b>0% Min</b>	327.84

The UNIVARIATE Procedure  
Variable: nm  
rooms = 5

Extreme Observations			
Lowest		Highest	
Value	Obs	Value	Obs
327.84	1003	1416.96	962
336.27	1274	1457.20	1102
388.92	1387	1527.30	1902
443.60	1553	1533.90	1170
473.64	1385	1661.55	718

The UNIVARIATE Procedure  
 Variable: nm  
 rooms = 6

Moments			
<b>N</b>	14	<b>Sum Weights</b>	14
<b>Mean</b>	998.925714	<b>Sum Observations</b>	13984.96
<b>Std Deviation</b>	330.291588	<b>Variance</b>	109092.533
<b>Skewness</b>	0.5766805	<b>Kurtosis</b>	-1.2608302
<b>Uncorrected SS</b>	15388139.1	<b>Corrected SS</b>	1418202.93
<b>Coeff Variation</b>	33.0646797	<b>Std Error Mean</b>	88.27414

Basic Statistical Measures			
Location		Variability	
<b>Mean</b>	998.9257	<b>Std Deviation</b>	330.29159
<b>Median</b>	856.7550	<b>Variance</b>	109093
<b>Mode</b>	.	<b>Range</b>	916.91000
		<b>Interquartile Range</b>	565.35000

Tests for Location: Mu0=0				
Test	Statistic		p Value	
<b>Student's t</b>	t	11.31618	<b>Pr &gt;  t </b>	<.0001
<b>Sign</b>	M	7	<b>Pr &gt;=  M </b>	0.0001
<b>Signed Rank</b>	S	52.5	<b>Pr &gt;=  S </b>	0.0001

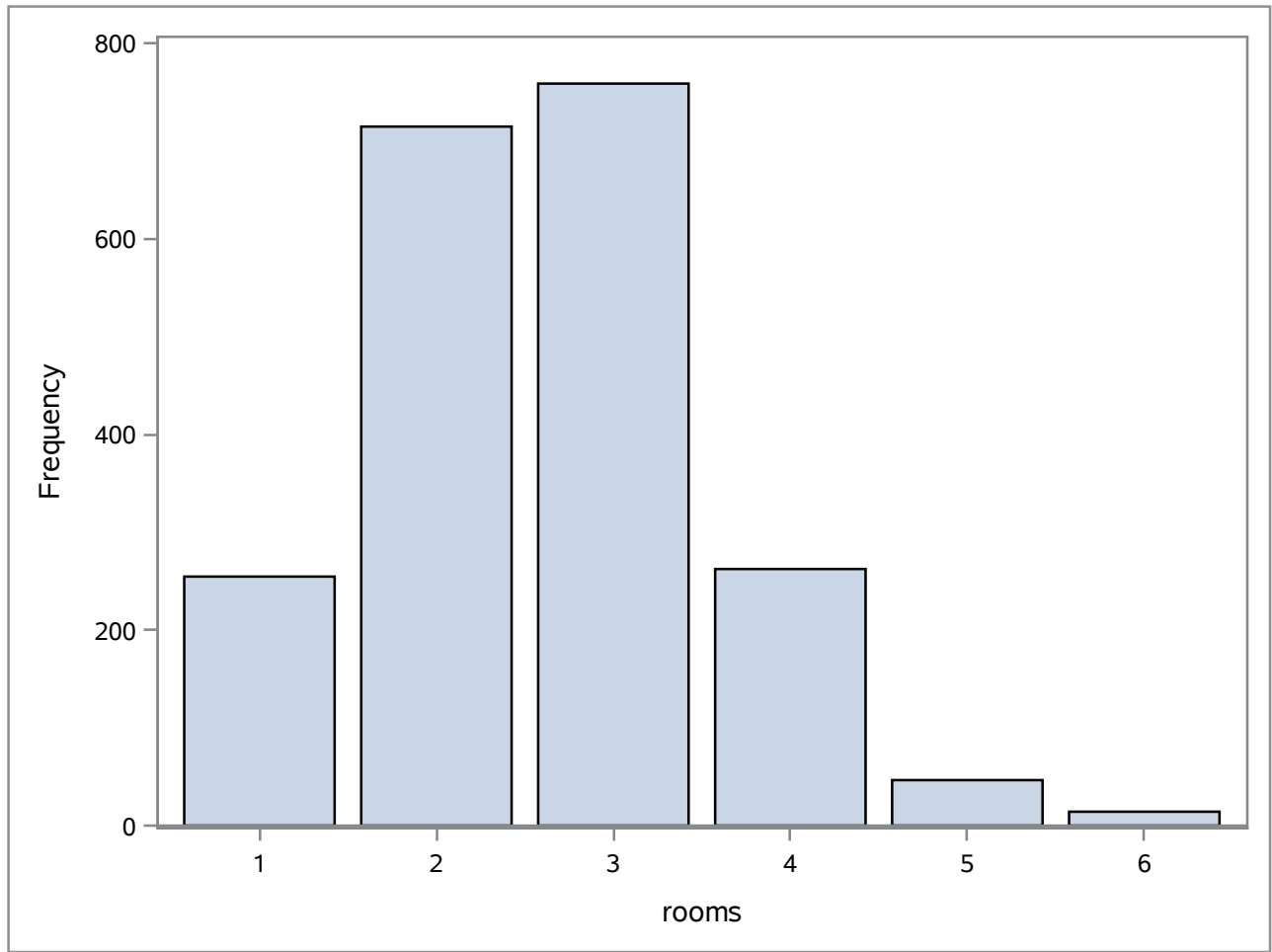
Quantiles (Definition 5)	
Level	Quantile
<b>100% Max</b>	1538.430
<b>99%</b>	1538.430
<b>95%</b>	1538.430
<b>90%</b>	1519.200
<b>75% Q3</b>	1344.720
<b>50% Median</b>	856.755
<b>25% Q1</b>	779.370
<b>10%</b>	639.130
<b>5%</b>	621.520
<b>1%</b>	621.520
<b>0% Min</b>	621.520

The UNIVARIATE Procedure  
Variable: nm  
rooms = 6

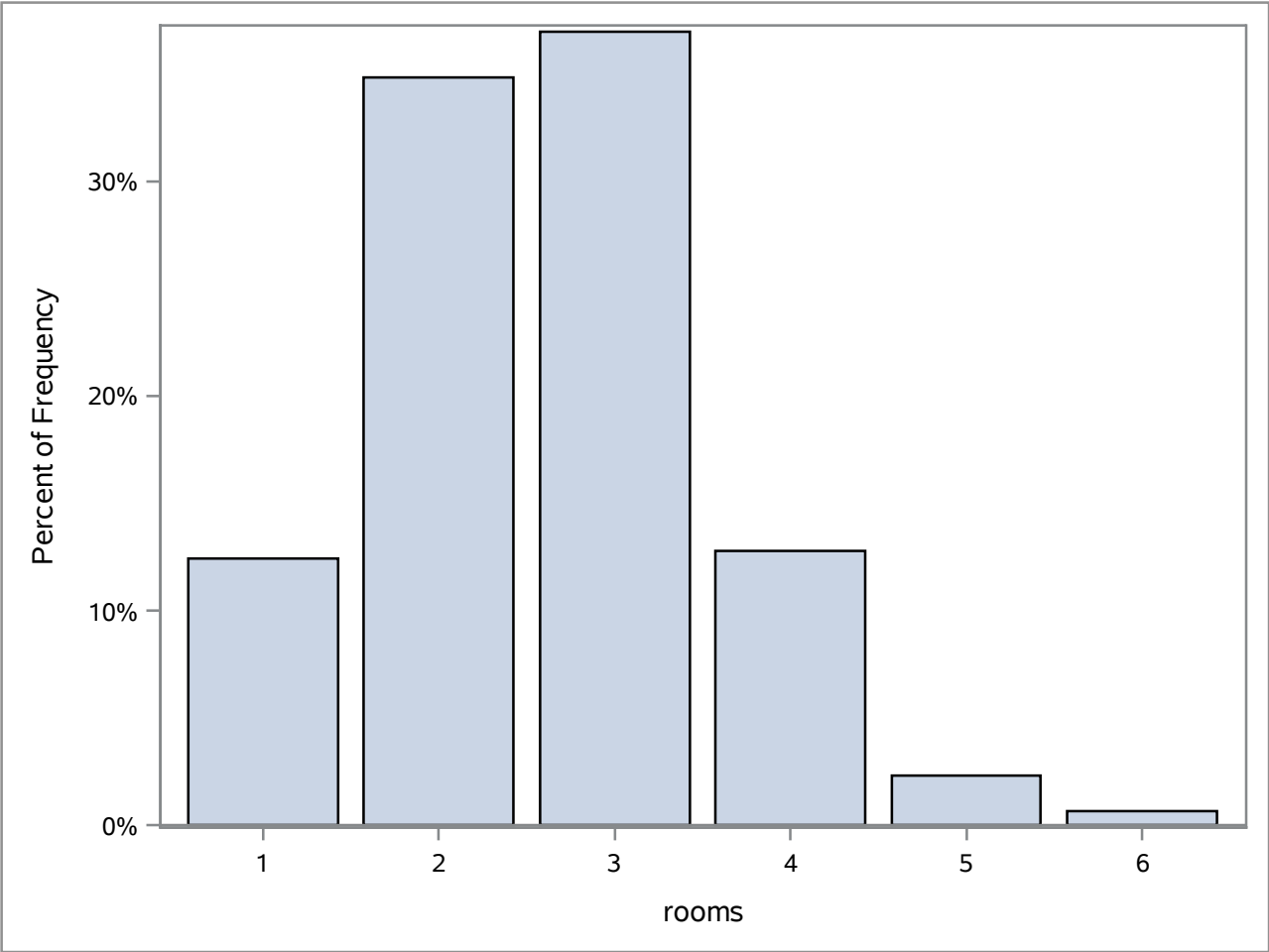
Extreme Observations			
Lowest		Highest	
Value	Obs	Value	Obs
621.52	969	1173.94	556
639.13	128	1344.72	357
676.77	543	1385.12	771
779.37	1839	1519.20	1745
784.32	1650	1538.43	851

## The MEANS Procedure

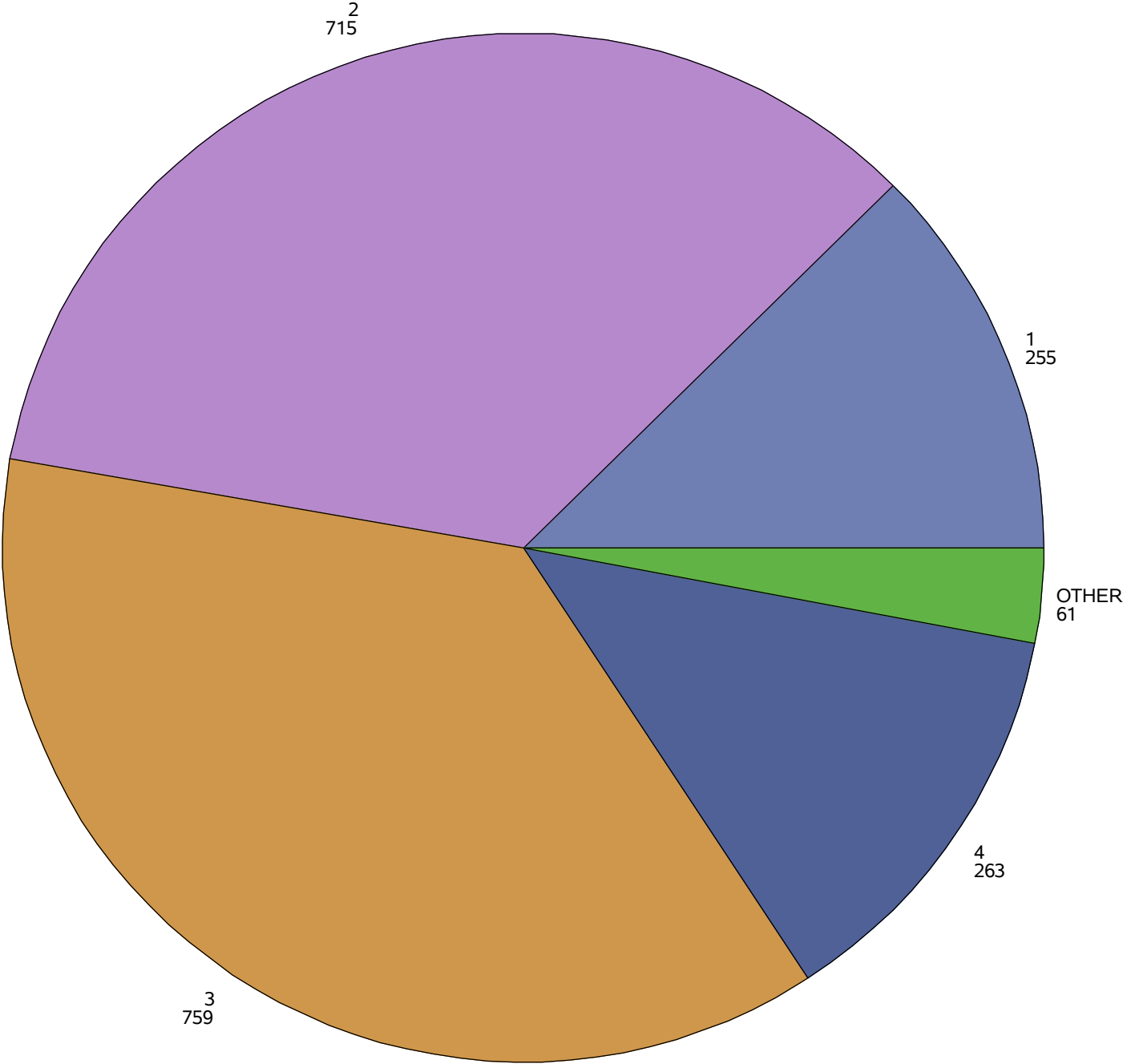
Analysis Variable : nm									
rooms	N Obs	Mean	Std Dev	Minimum	Lower Quartile	Median	Upper Quartile	Maximum	N
1	255	346.9451765	100.3332306	106.2200000	292.6100000	344.0600000	393.7000000	1288.48	255
2	715	486.7940979	166.5325065	77.3100000	373.5600000	486.7600000	590.5400000	1467.69	715
3	759	633.5174572	229.3336341	145.3100000	472.7400000	617.6000000	769.7600000	1789.55	759
4	263	747.9875285	261.7269789	193.1800000	546.5000000	723.4900000	920.3400000	1749.15	263
5	47	900.5672340	338.6627186	327.8400000	619.9400000	917.0200000	1159.36	1661.55	47
6	14	998.9257143	330.2915880	621.5200000	779.3700000	856.7550000	1344.72	1538.43	14

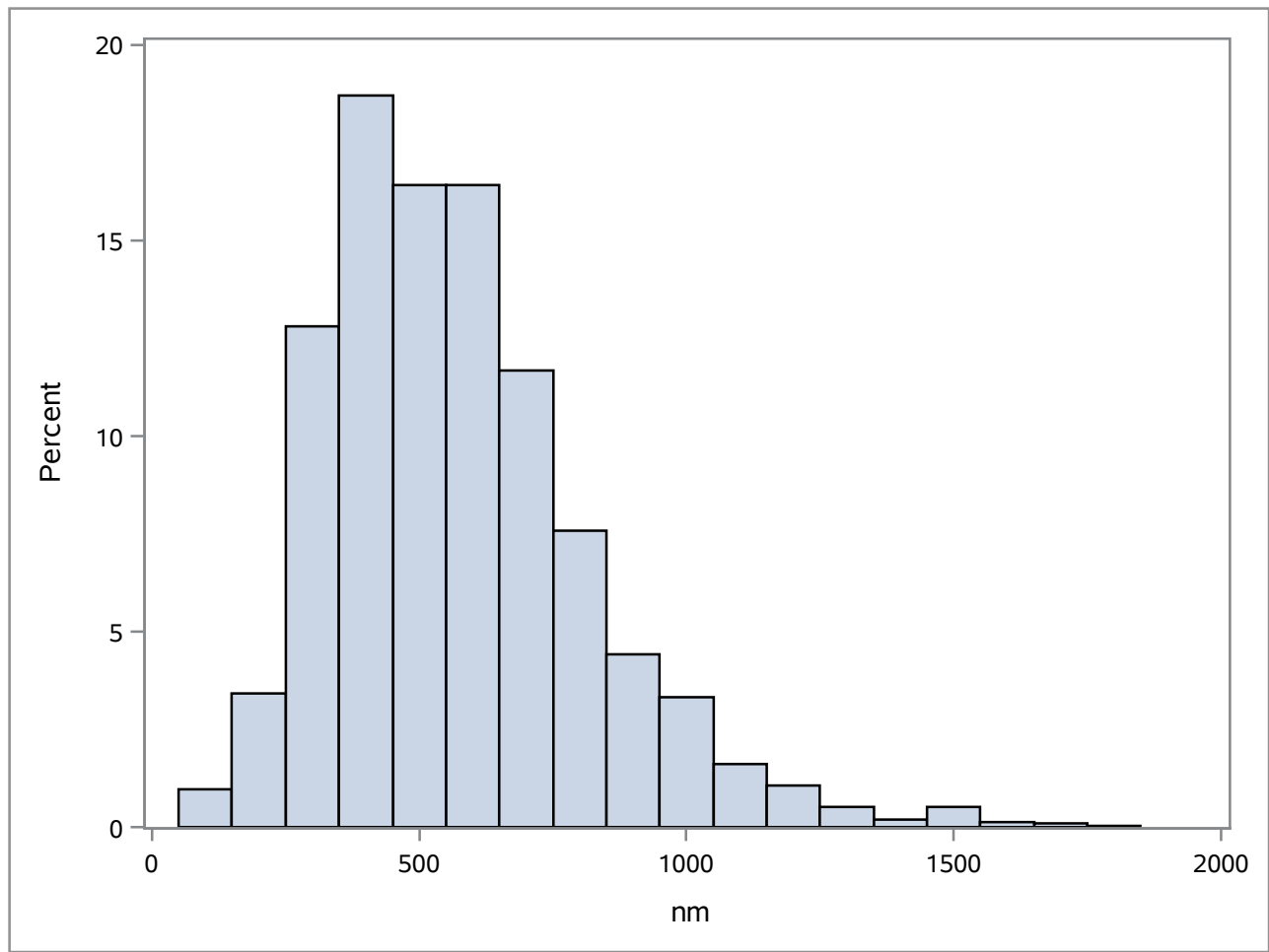


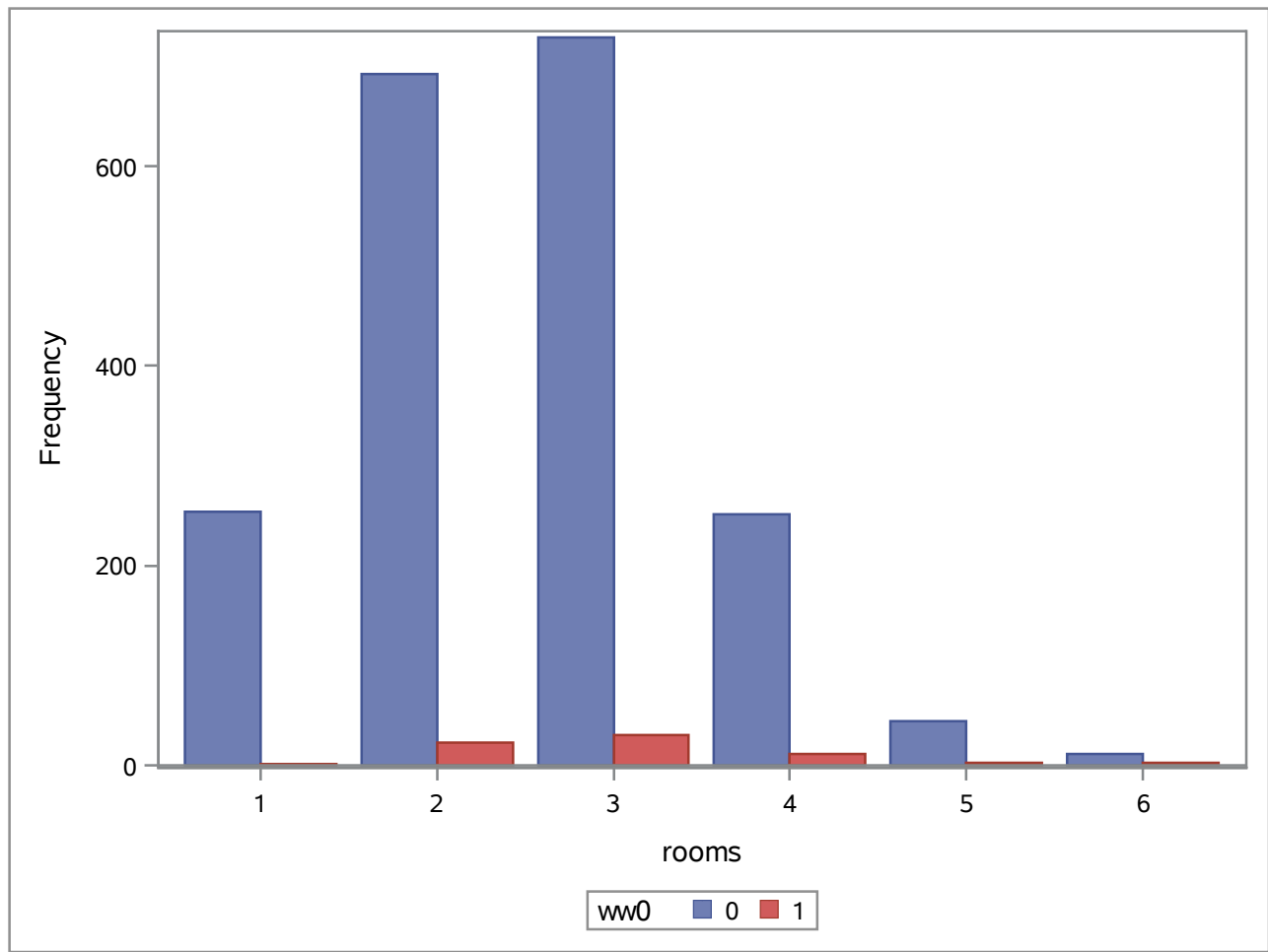


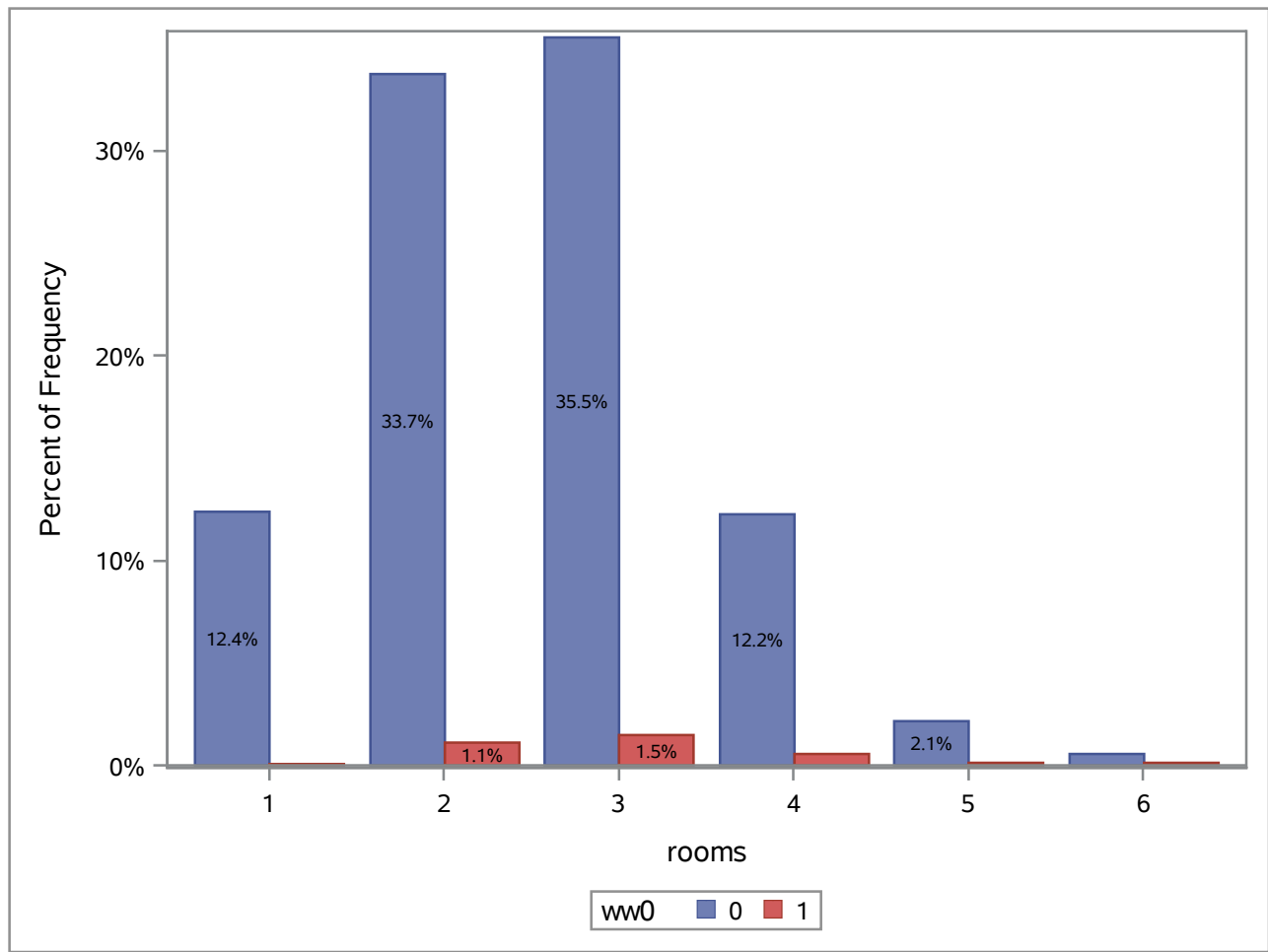


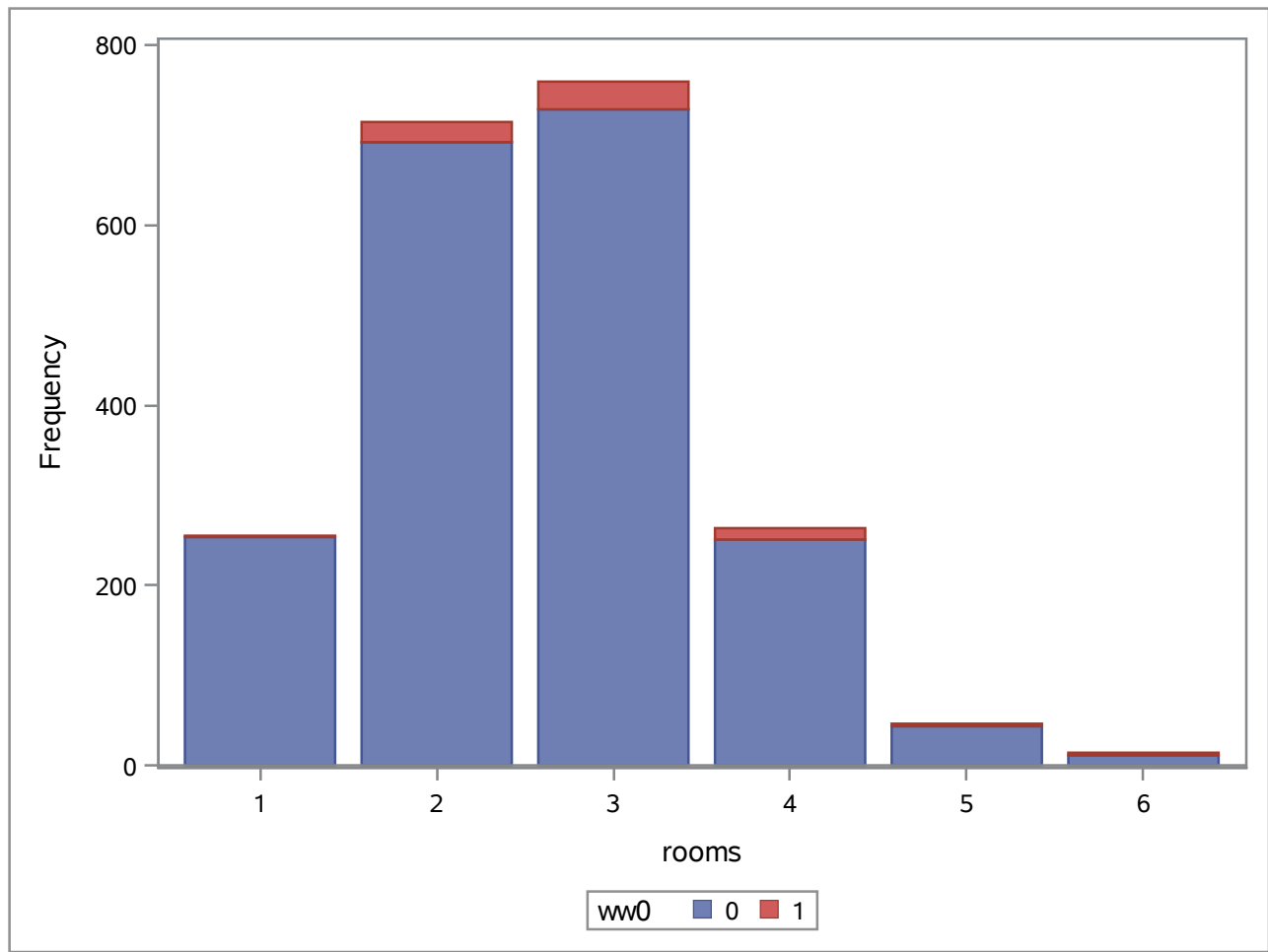
FREQUENCY of rooms





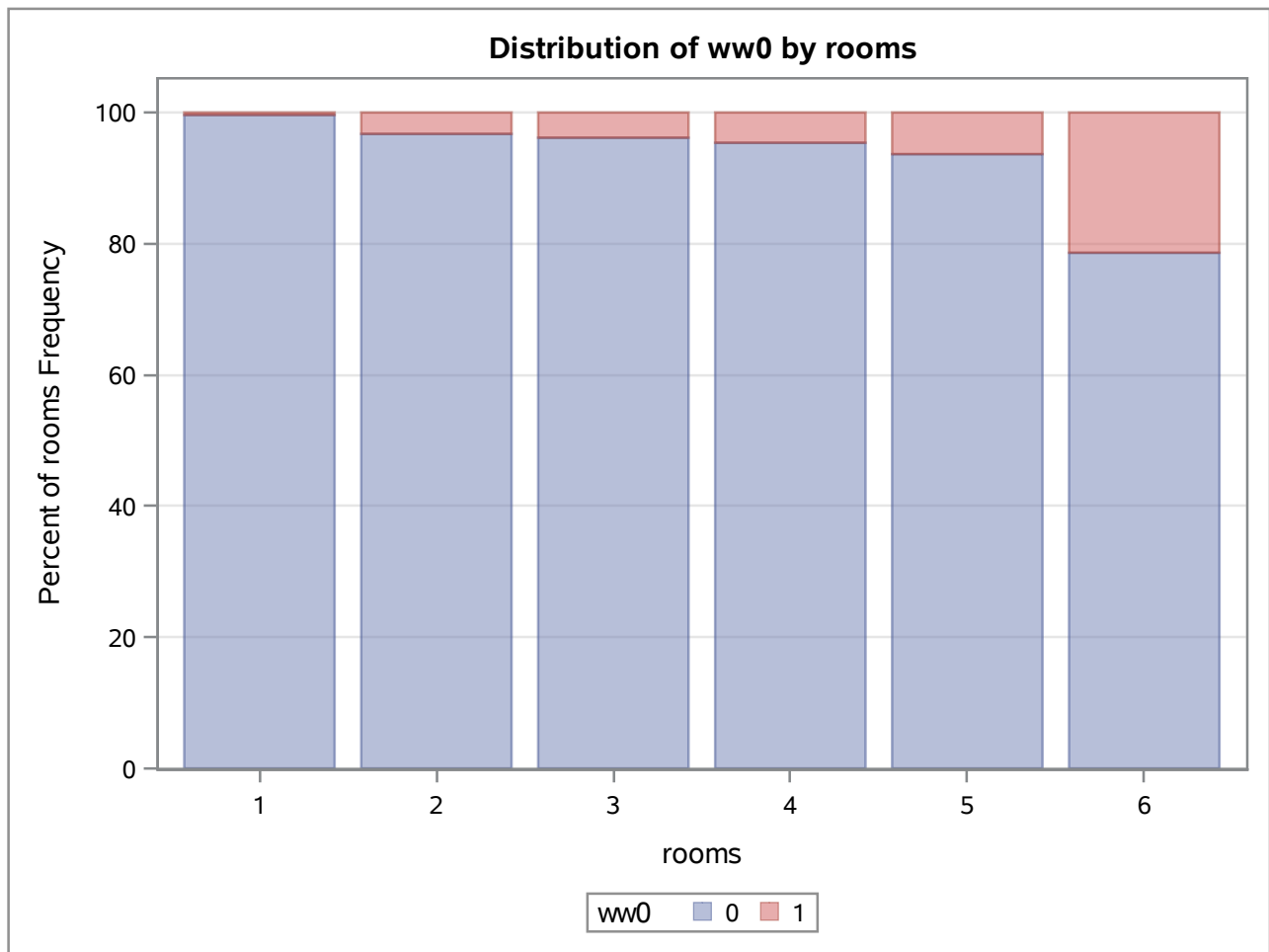






The FREQ Procedure

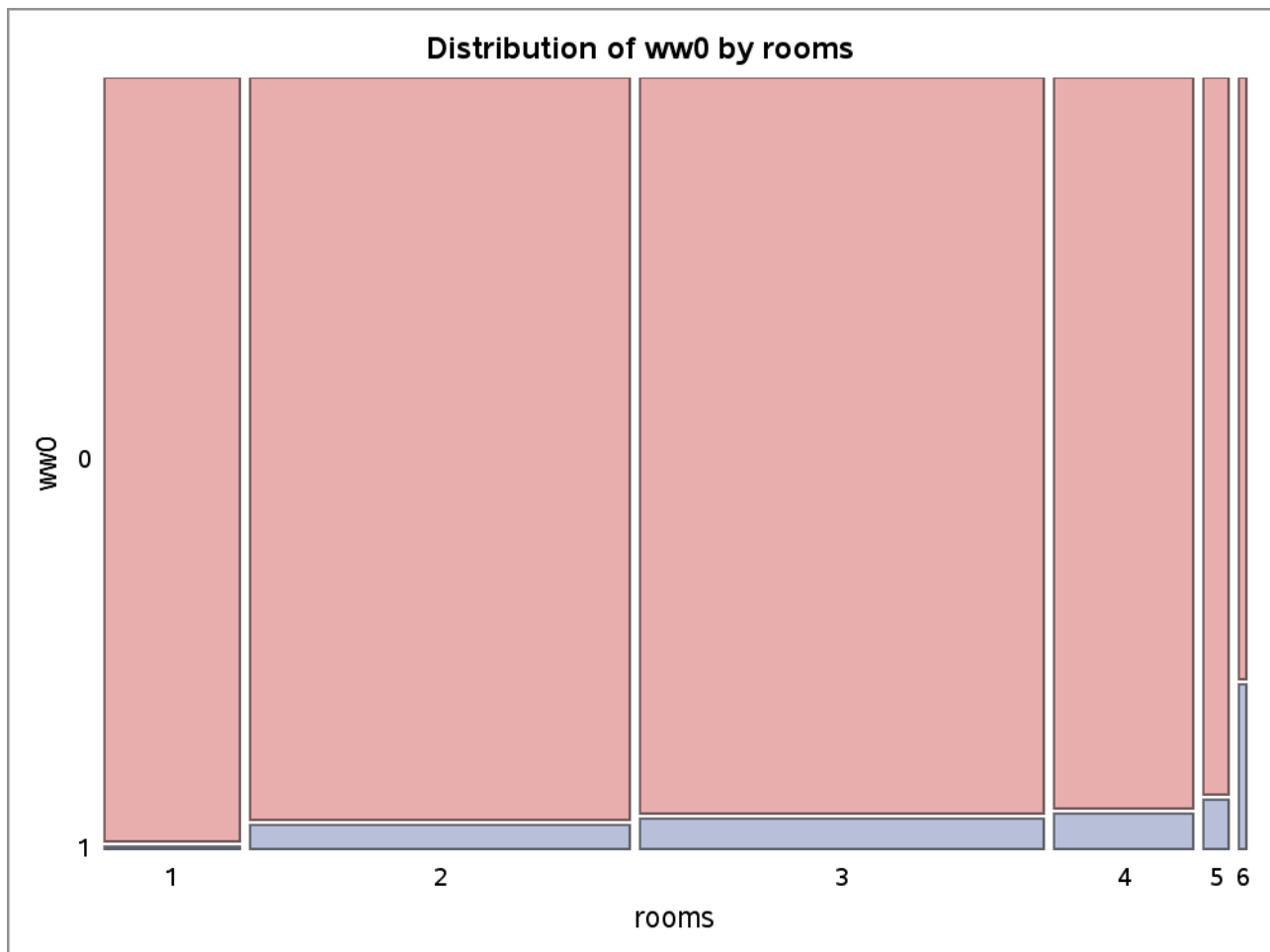
Table of ww0 by rooms							
ww0	rooms						Total
	1	2	3	4	5	6	
0	254	692	729	251	44	11	1981
	12.37	33.71	35.51	12.23	2.14	0.54	96.49
	12.82	34.93	36.80	12.67	2.22	0.56	
	99.61	96.78	96.05	95.44	93.62	78.57	
1	1	23	30	12	3	3	72
	0.05	1.12	1.46	0.58	0.15	0.15	3.51
	1.39	31.94	41.67	16.67	4.17	4.17	
	0.39	3.22	3.95	4.56	6.38	21.43	
<b>Total</b>	255	715	759	263	47	14	2053
	12.42	34.83	36.97	12.81	2.29	0.68	100.00



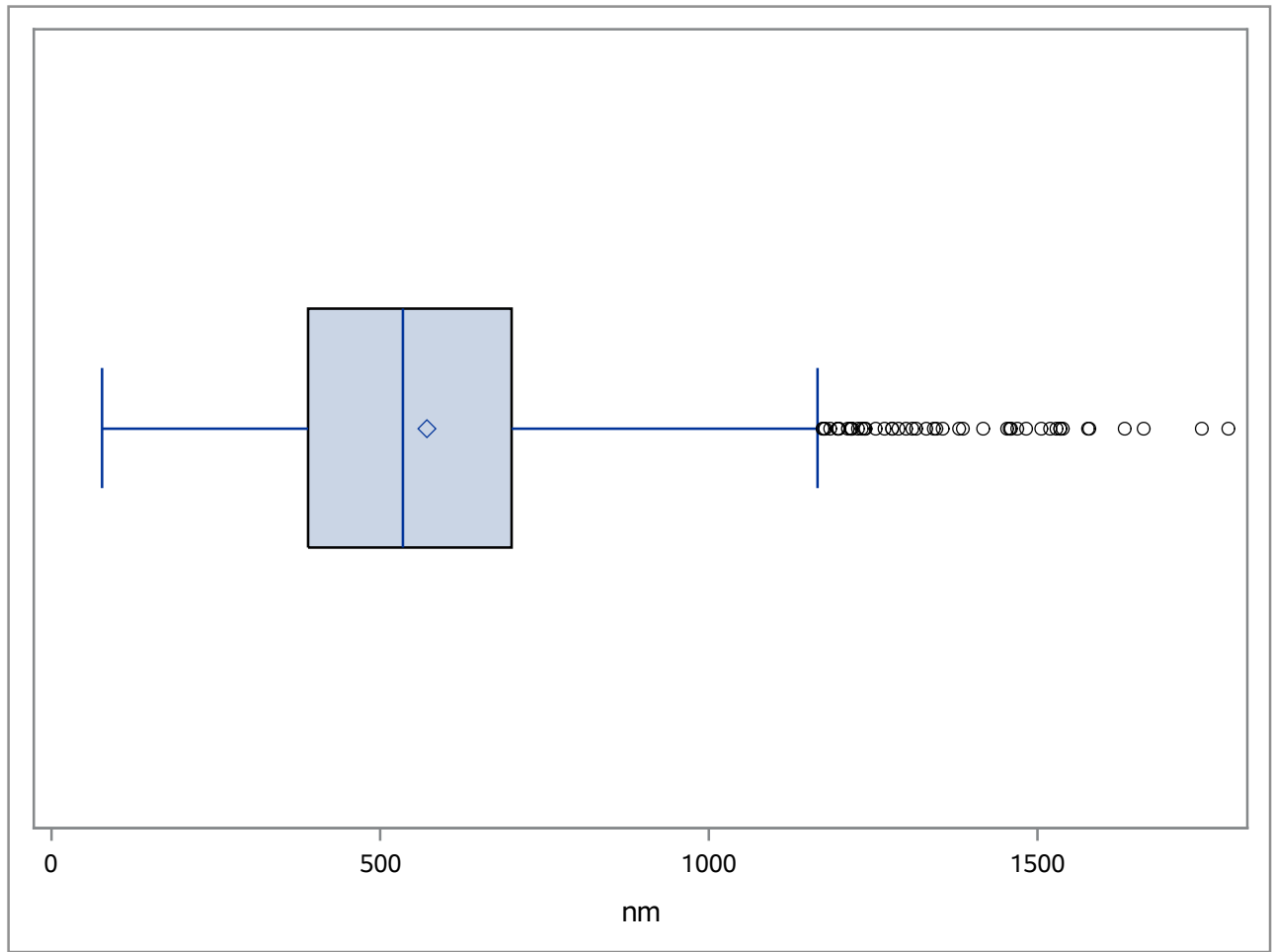
The FREQ Procedure

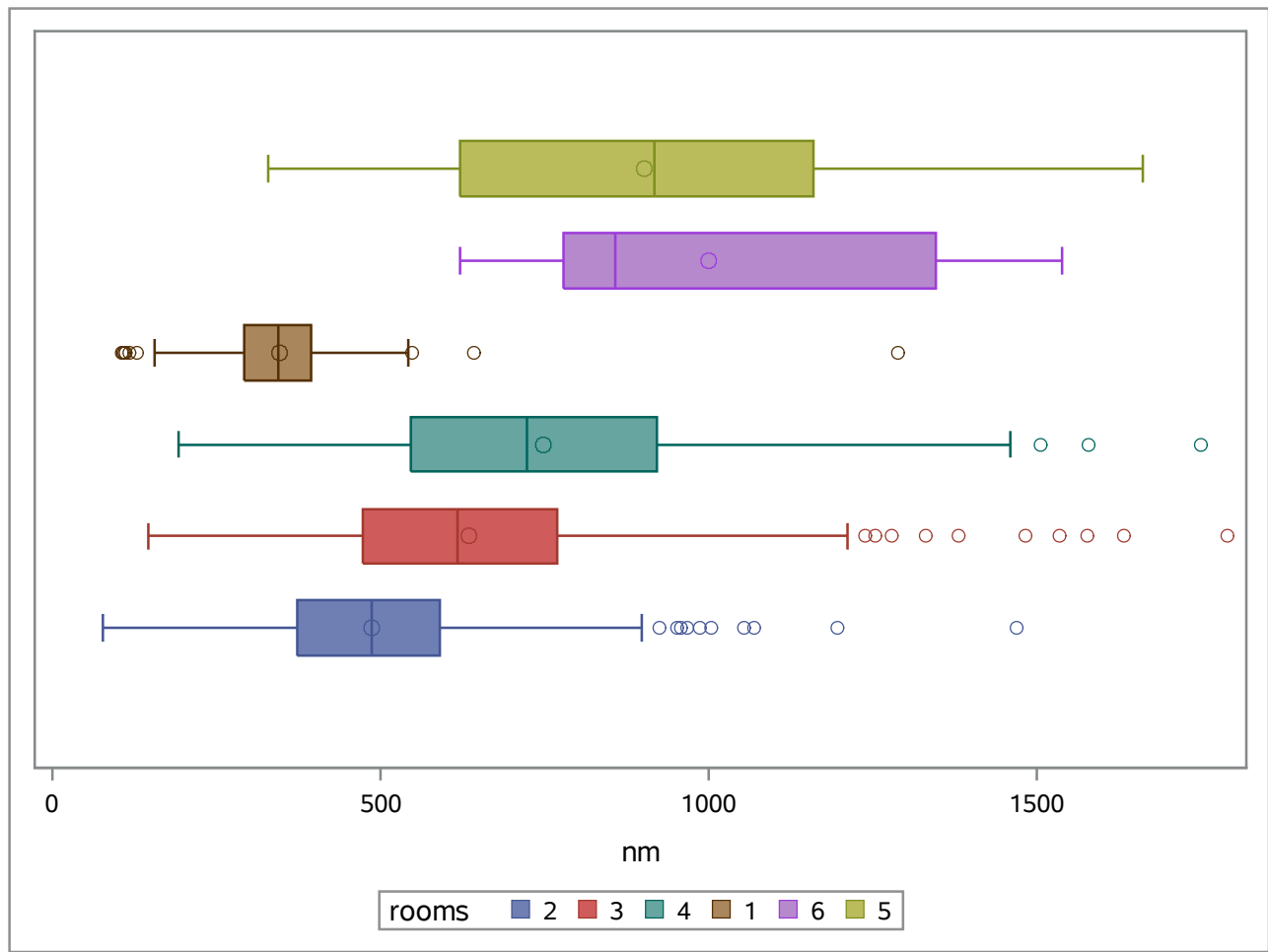
Frequency  
Percent  
Row Pct  
Col Pct

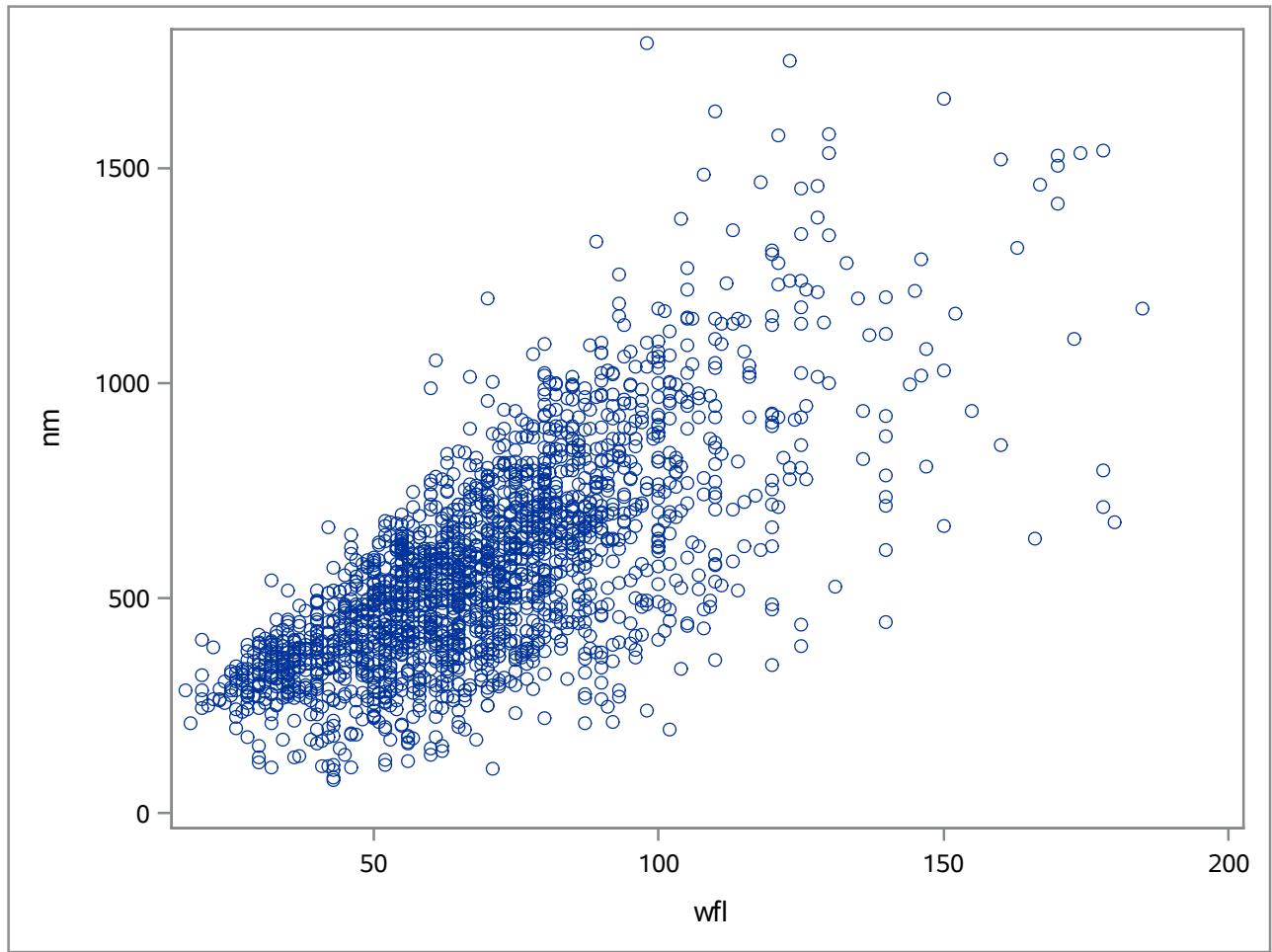
Table of ww0 by rooms							
ww0	rooms						Total
	1	2	3	4	5	6	
0	254	692	729	251	44	11	1981
	12.37	33.71	35.51	12.23	2.14	0.54	96.49
	12.82	34.93	36.80	12.67	2.22	0.56	
	99.61	96.78	96.05	95.44	93.62	78.57	
1	1	23	30	12	3	3	72
	0.05	1.12	1.46	0.58	0.15	0.15	3.51
	1.39	31.94	41.67	16.67	4.17	4.17	
	0.39	3.22	3.95	4.56	6.38	21.43	
<b>Total</b>	255	715	759	263	47	14	2053
	12.42	34.83	36.97	12.81	2.29	0.68	100.00

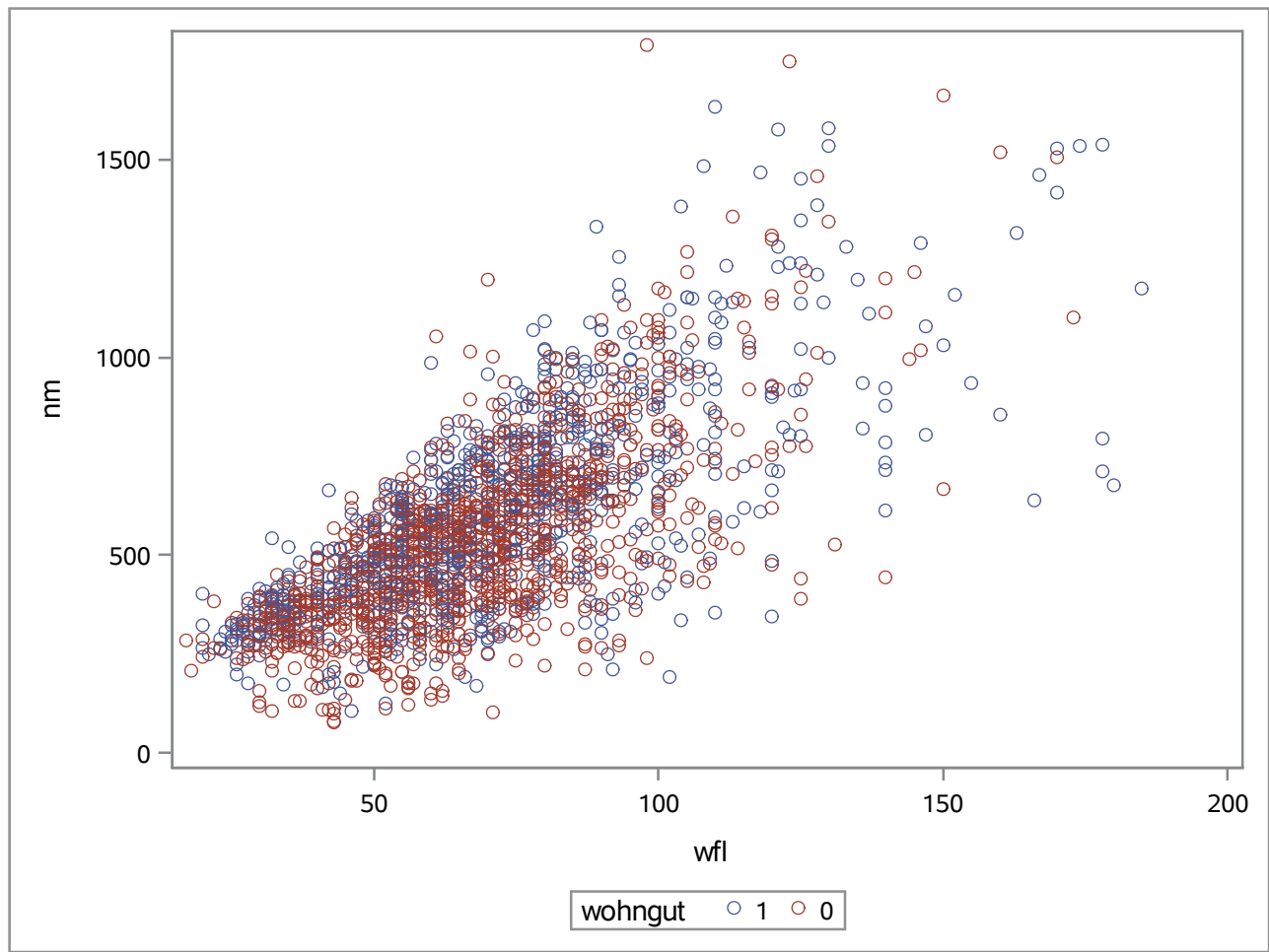












The CORR Procedure

<b>3 Variables:</b>	nm	nmqm	wfl
---------------------	----	------	-----

Simple Statistics						
Variable	N	Mean	Std Dev	Sum	Minimum	Maximum
nm	2053	570.09298	245.43451	1170401	77.31000	1790
nmqm	2053	8.39390	2.46674	17233	1.47000	20.09000
wfl	2053	69.59523	25.16256	142879	17.00000	185.00000

Pearson Correlation Coefficients, N = 2053 Prob >  r  under H0: Rho=0			
	nm	nmqm	wfl
nm	1.00000	0.47480 <.0001	0.70746 <.0001
nmqm	0.47480 <.0001	1.00000	-0.22683 <.0001
wfl	0.70746 <.0001	-0.22683 <.0001	1.00000

The CORR Procedure

<b>3 Variables:</b>	nm	nmqm	wfl
---------------------	----	------	-----

Simple Statistics						
Variable	N	Mean	Std Dev	Median	Minimum	Maximum
nm	2053	570.09298	245.43451	534.30000	77.31000	1790
nmqm	2053	8.39390	2.46674	8.47000	1.47000	20.09000
wfl	2053	69.59523	25.16256	67.00000	17.00000	185.00000

Spearman Correlation Coefficients, N = 2053 Prob >  r  under H0: Rho=0			
	nm	nmqm	wfl
nm	1.00000	0.46109 <.0001	0.69708 <.0001
nmqm	0.46109 <.0001	1.00000	-0.23038 <.0001
wfl	0.69708 <.0001	-0.23038 <.0001	1.00000

The CORR Procedure

<b>3 Variables:</b>	nm	nmqm	wfl
---------------------	----	------	-----

Simple Statistics						
Variable	N	Mean	Std Dev	Median	Minimum	Maximum
<b>nm</b>	2053	570.09298	245.43451	534.30000	77.31000	1790
<b>nmqm</b>	2053	8.39390	2.46674	8.47000	1.47000	20.09000
<b>wfl</b>	2053	69.59523	25.16256	67.00000	17.00000	185.00000

Kendall Tau b Correlation Coefficients, N = 2053 Prob >  tau  under H0: Tau=0			
	nm	nmqm	wfl
<b>nm</b>	1.00000	0.33209 <.0001	0.51542 <.0001
<b>nmqm</b>	0.33209 <.0001	1.00000	-0.15726 <.0001
<b>wfl</b>	0.51542 <.0001	-0.15726 <.0001	1.00000

The CORR Procedure

<b>3 Variables:</b>	nm	nmqm	wfl
---------------------	----	------	-----

Simple Statistics						
Variable	N	Mean	Std Dev	Median	Minimum	Maximum
nm	2053	570.09298	245.43451	534.30000	77.31000	1790
nmqm	2053	8.39390	2.46674	8.47000	1.47000	20.09000
wfl	2053	69.59523	25.16256	67.00000	17.00000	185.00000

Pearson Correlation Coefficients, N = 2053 Prob >  r  under H0: Rho=0			
	nm	nmqm	wfl
nm	1.00000	0.47480 <.0001	0.70746 <.0001
nmqm	0.47480 <.0001	1.00000	-0.22683 <.0001
wfl	0.70746 <.0001	-0.22683 <.0001	1.00000

Spearman Correlation Coefficients, N = 2053 Prob >  r  under H0: Rho=0			
	nm	nmqm	wfl
nm	1.00000	0.46109 <.0001	0.69708 <.0001
nmqm	0.46109 <.0001	1.00000	-0.23038 <.0001
wfl	0.69708 <.0001	-0.23038 <.0001	1.00000

Kendall Tau b Correlation Coefficients, N = 2053 Prob >  tau  under H0: Tau=0			
	nm	nmqm	wfl
nm	1.00000	0.33209 <.0001	0.51542 <.0001
nmqm	0.33209 <.0001	1.00000	-0.15726 <.0001
wfl	0.51542 <.0001	-0.15726 <.0001	1.00000



The REG Procedure  
 Model: MODEL1  
 Dependent Variable: nm

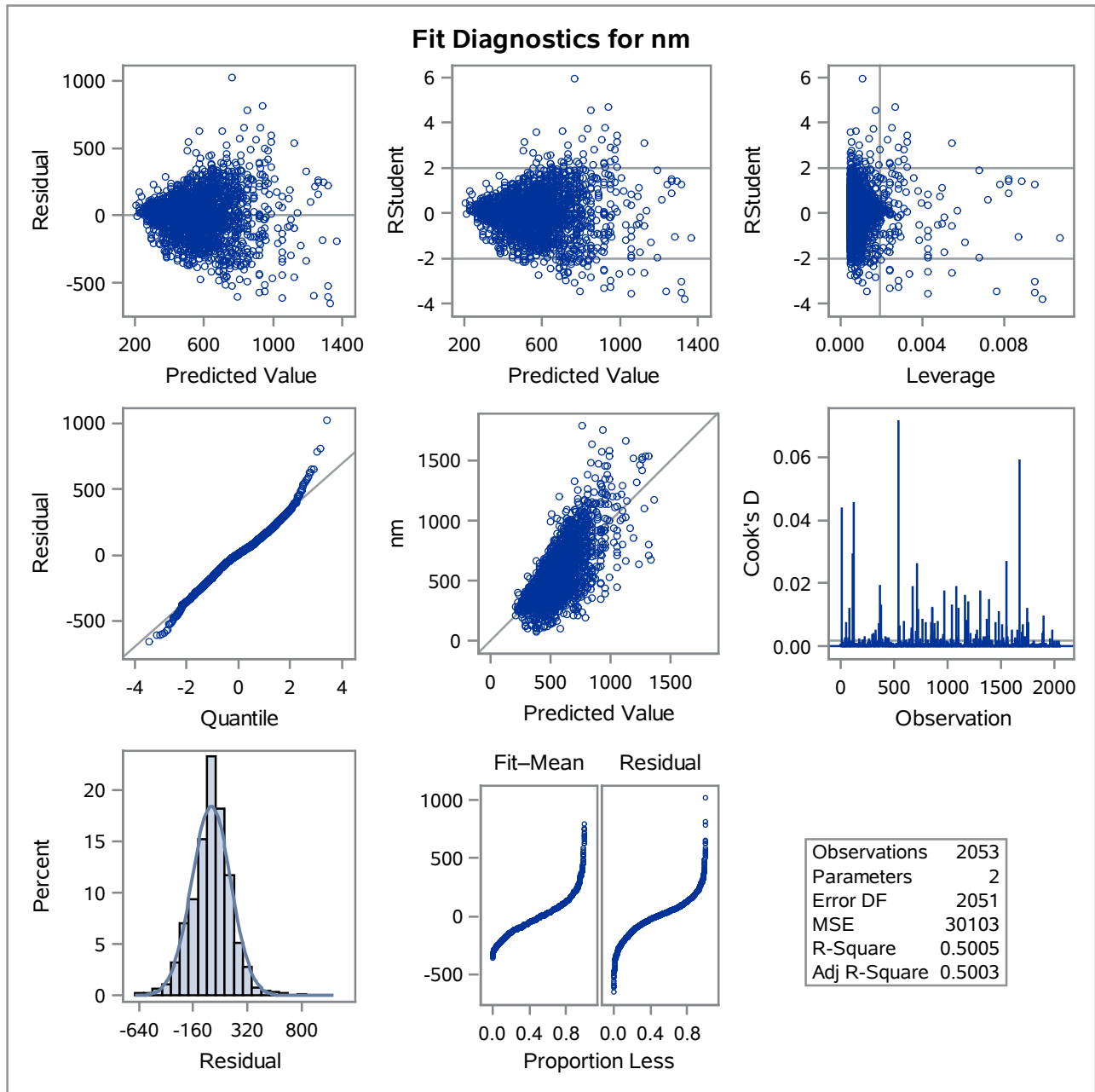
Number of Observations Read	2053
Number of Observations Used	2053

Analysis of Variance					
Source	DF	Sum of Squares	Mean Square	F Value	Pr > F
Model	1	61866515	61866515	2055.13	<.0001
Error	2051	61742060	30103		
Corrected Total	2052	123608575			

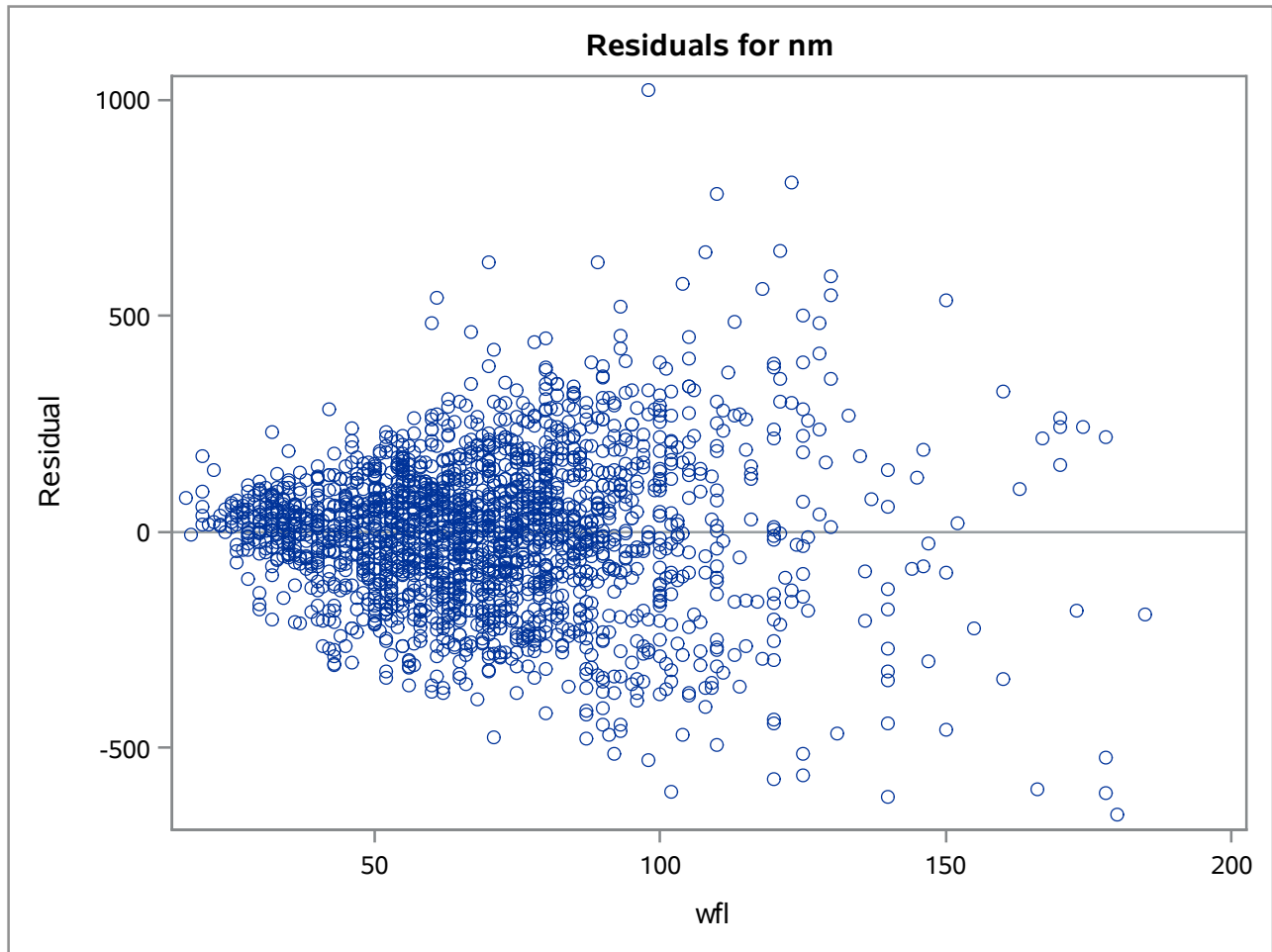
Root MSE	173.50329	R-Square	0.5005
Dependent Mean	570.09298	Adj R-Sq	0.5003
Coeff Var	30.43421		

Parameter Estimates					
Variable	DF	Parameter Estimate	Standard Error	t Value	Pr >  t
Intercept	1	89.84691	11.26444	7.98	<.0001
wfl	1	6.90056	0.15222	45.33	<.0001

The REG Procedure  
Model: MODEL1  
Dependent Variable: nm



The REG Procedure  
Model: MODEL1  
Dependent Variable: nm



The REG Procedure  
Model: MODEL1  
Dependent Variable: nm

